

VERCO



visual desking

Desking	4
Screens	16
Storage	20
Tables	22
Executive Furniture	24



At VERCO we **think** as much about **people** and **businesses** as we do about **furniture**.

Every organisation is **dynamic**, involved in a process of continual **change**. This affects the way people work, handle their **professional relationships** and manage their business as a whole. VERCO has the **experience** and skills to **focus** the best in design, technology and materials to produce **real solutions** that help **support** your organisation and business – in every sense – as it develops.



Everything VERCO does is driven by a **passion** to match **innovation** with **excellence**. With an existing **reputation** for producing an extensive range of **quality office seating** VERCO has quickly established itself in the market place as a major manufacturer of **Executive** and **System Furniture**. Utilising the latest technology in manufacturing plant and machinery, allied to the **skills** and **craftsmanship** of a dedicated workforce, these products represent the culmination of over **90 years of experience** within the furniture market.

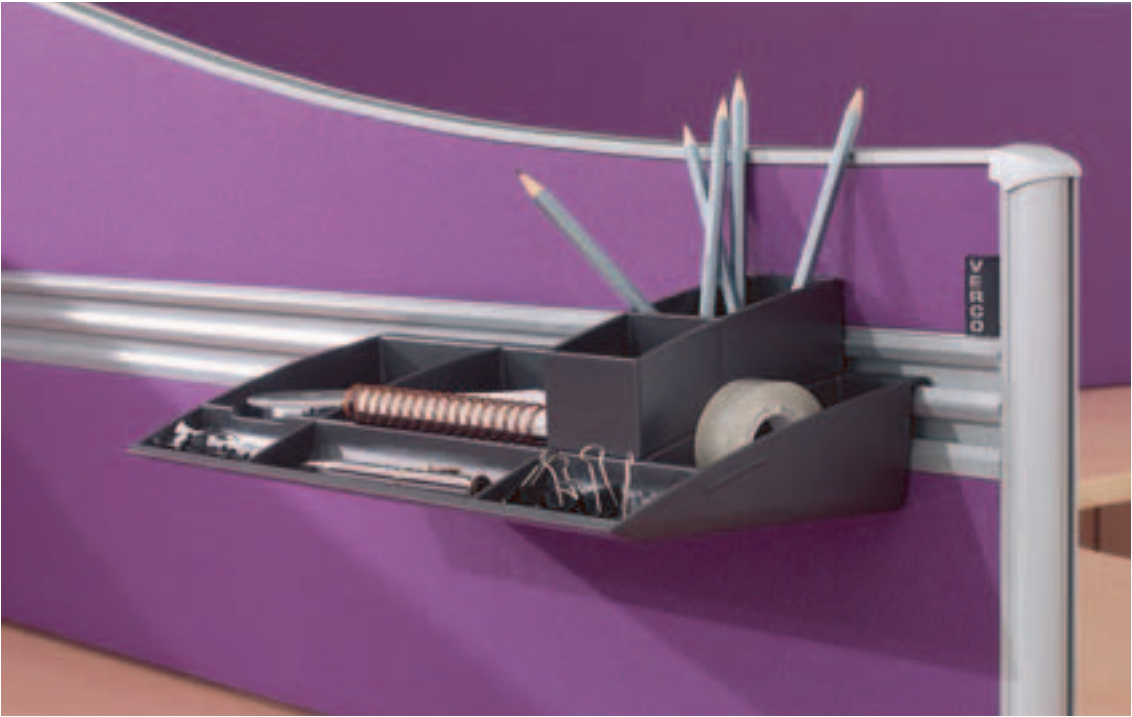
Cutting edge **design** and construction combined with the qualities of **strength, flexibility** and **individual style**, create a **unique** and extensive range.

Easy to specify and **easy** to install – the secret of VISUAL Desking's **functionality**.



A fully **adjustable** beam, slots into the leg frame without the need for tools – forming a **rigid structure within minutes**.

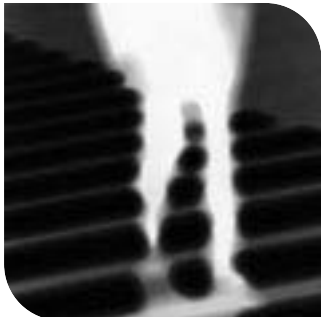




By allowing components to be shared between workstations, VISUAL Desking offers consistency, choice and the flexibility to meet the infinite demands of the modern office, both ergonomically and economically. This adaptability within the system eliminates the barriers to growth within the office environment.



our **modular** furniture represents simple practicality with flair to **adapt** to new **configurations**, offering enough **choice** to express the individuality of **your** enterprise, allowing the **freedom** to combine advanced technology, personal **storage** and informal meeting areas in one **seamless** office.

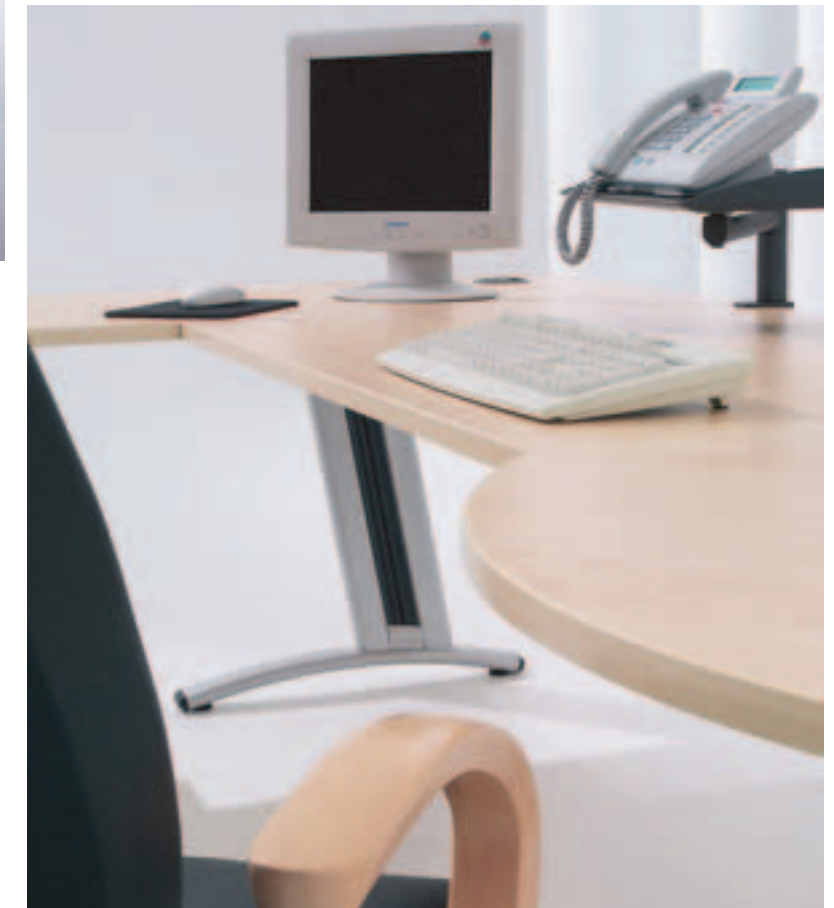




The paperless office has **proven** to be more of a myth than a reality. Where **there is a demand** for high capacity storage, a **variety** of units in **numerous sizes and styles** are available to accept either system internals or simple **wooden** shelves.



Available in a choice of three MFC finishes; Oak, Beech and Maple, VISUAL Desking provides the **durability, reliability** and **flexibility** required by any modern office environment.



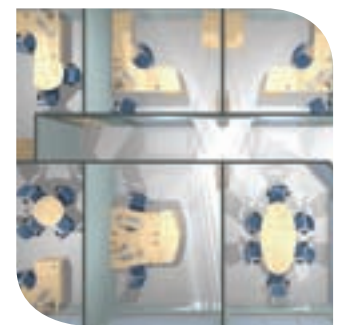


Easy to specify and install - the secret behind VISUAL TWO desking's success is simplicity and functionality. Which means that as your business changes, so can your workspace. Create a **style** as individual as the people who use it. It's that simple.



Visual Three - with the panel end.

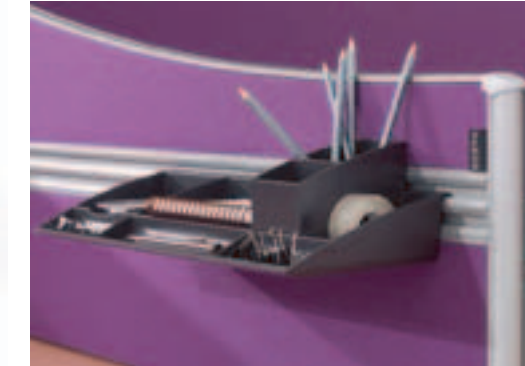
A **different** look. The same ease of assembly. For individual desking or smaller configurations. The ultimate in flexibility.





By allowing **direct communication** between colleagues, VISUAL Screening brings about an increase in the transfer of **ideas and inspiration** whilst still allowing each person their **own workspace** – ensuring a pleasant, **productive** and efficient environment.





An **extensive** range of **options** allows these screens to offer more than simply work station or room division. **Tool bars**, **header panels** and **stacking** modules all provide added benefits to this **sophisticated** system screen portfolio.



Storage is a **key** element to a **successful** office environment. VISUAL Desking is able to accommodate a variety of storage needs with **mobile** and **desk high pedestals**, together with bookcase units and four heights of high density **storage** units where greater **volume** is required.

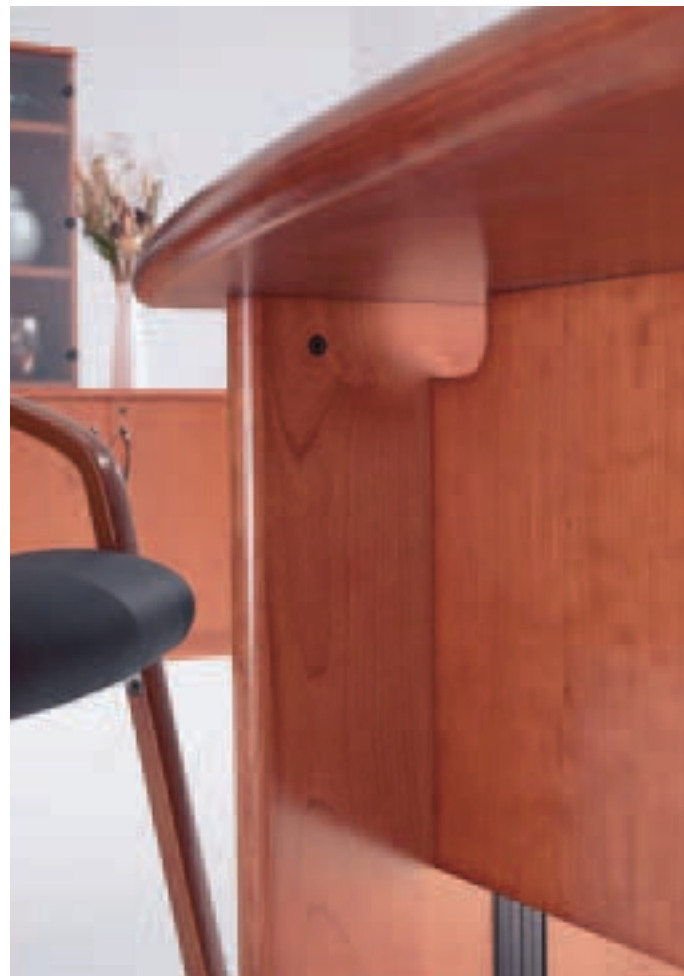




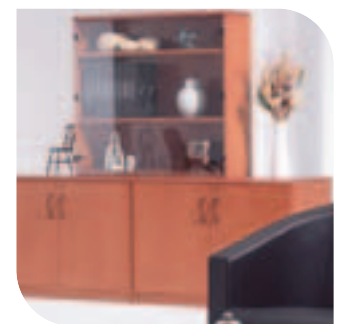
In **meeting** rooms, break out areas and conference rooms where **flexibility** is the key, VISUAL Desking's static and height **adjustable** tables offer a simple and effective solution.



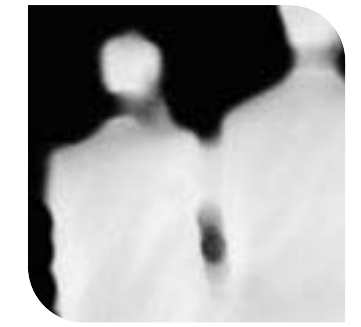
The **Corniche** Desking range represents a **commitment** to providing a range of executive furniture with the **highest** achievable standards of **elegance** and quality.



Desk Tops are 40mm thick with solid **WOOD** lippings all round and with Bull Nose profiles on the front and rear edges. A **choice** of three veneers; **Oak, Cherry, and Maple** and the additional ability to stain to sample ensures that **Corniche** will **enhance** any office environment.



Simplicity of form and function is standard in **Intuition** where soft and subtle 'organic' desk shapes provide pleasing **ergonomic** solutions. A truly **versatile** and comprehensive range available in a choice of; Cherry, Maple and Walnut real wood veneers, Intuition offers the highest levels of functionality **demande**d by today's modern work practices.



VERCO Office Furniture Limited
Chapel Lane Sands
High Wycombe
Buckinghamshire
HP12 4BG England

t. +44 (0) 1494 448000
f. +44 (0) 1494 464216
w. www.verco.co.uk
e. info@verco.co.uk

